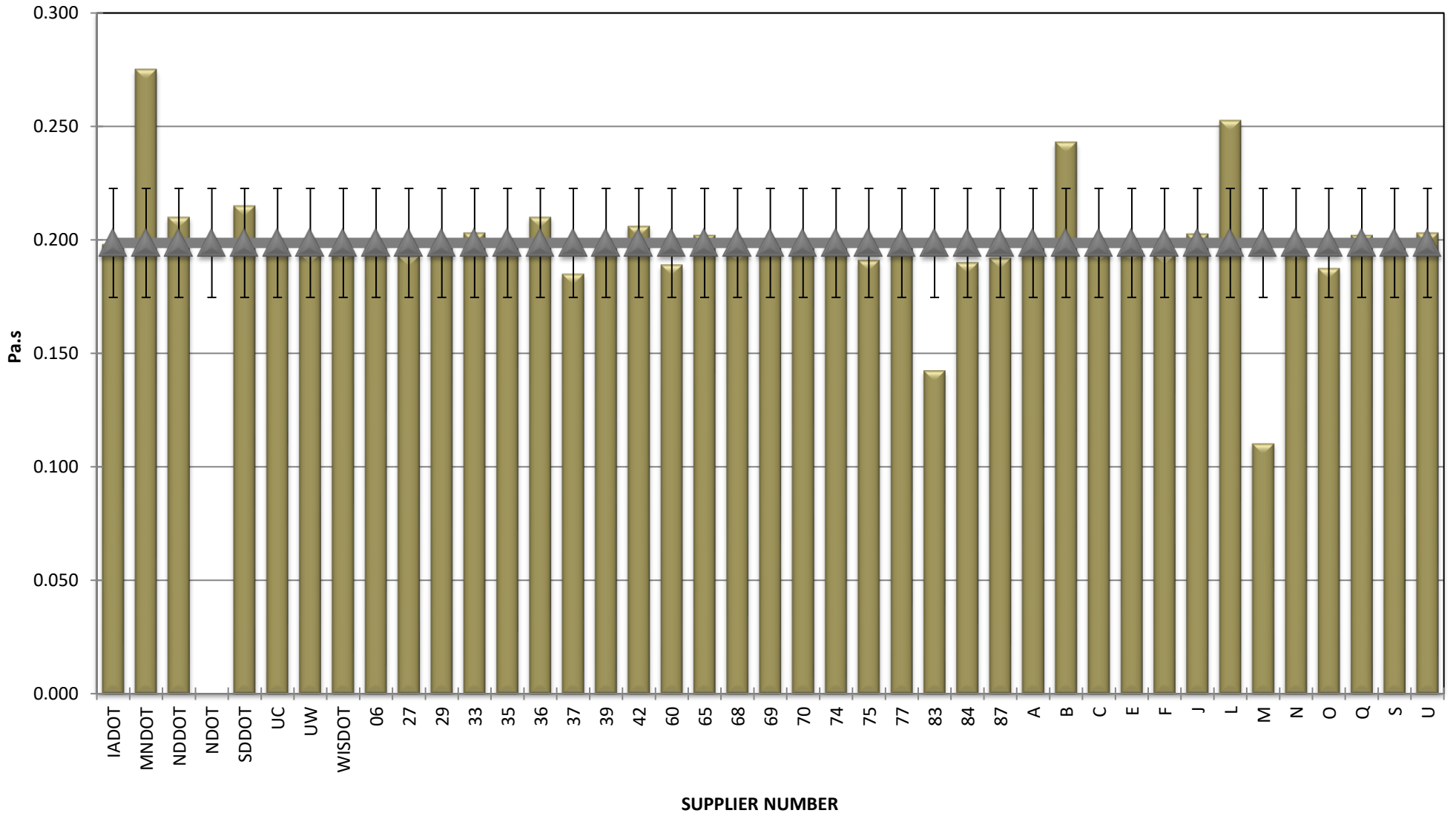


**COMBINED STATE BINDER GROUP ROUND ROBIN SUMMARY B 2019-2
PG 52S-34**

	Rot. Visc.	ODSR	RTFO DSR	PAVDSR	Mass Loss	S-value	m-value	Jnr @ 100 Pa	% Rec. 100 Pa	Jnr @ 3200 Pa	% Rec. @ 3200 Pa
A											
19	0.197	1.41		4,429	0.668	289	0.317	2,321	5.20	2,576	1.60
51	0.197	1.40		3,650	0.693	299	0.311	2,328	6.10	2,574	1.50
97	0.197	1.42		4,252	0.690	301	0.316	2,291	5.10	2,532	1.60
98	0.197	1.41		4,354	0.689	300	0.317	2,213	6.20	2,454	1.60
AVERAGE	0.197	1.41		4,171	0.685	297	0.315	2,288	5.65	2,534	1.58
B											
01	0.237	1.34		5,100	0.714	288	0.316	2,330	5.08	2,560	1.40
17	0.245	1.40		5,210	0.740	298	0.312	2,170	5.11	2,380	1.62
45	0.247	1.38		4,800	0.691	306	0.309	2,470	4.26	2,710	1.25
AVERAGE	0.243	1.37		5,037	0.715	297.3333	0.312	2,323	4.82	2,550	1.42
C											
28	0.195	1.40		3,952	0.559	272	0.334	2,560	3.59	2,790	1.23
66	0.195	1.37		4,006	0.549	268	0.337	2,450	4.47	2,700	1.33
90	0.195	1.40		3,947	0.573	266	0.330	2,630	4.79	2,930	1.23
99	0.195	1.39		4,158	0.557	264	0.331	2,610	3.44	2,840	1.23
AVERAGE	0.195	1.39		4,016	0.560	267.5	0.333	2,563	4.07	2,815	1.26
E											
15	0.200	1.32		4,710	0.813	268	0.322	2,332	3.47	2,541	0.72
89	0.190	1.31		4,350	0.704	276	0.328	2,498	2.87	2,701	0.52
AVERAGE	0.195	1.32		4,530	0.759	272	0.325	2,415	3.17	2,621	0.62
F											
02	0.193	1.41		4,410	0.771	294	0.322	2,100	4.36	2,320	0.70
11	0.191	1.35		4,303	0.743	299	0.322	2,400	3.57	2,600	1.46
34	0.195	1.31		4,428	0.687	301	0.325	2,430	4.53	2,670	1.38
48	0.195	1.33		4,260	0.667	303	0.326	2,480	3.90	2,720	1.24
56	0.188	1.34		4,040	0.686	300	0.326	2,300	3.47	2,520	1.44
62	0.200	1.42		4,354	0.870	276	0.321	2,170	5.16	2,420	0.64
AVERAGE	0.194	1.36		4,299	0.737	295.5	0.324	2,313	4.17	2,542	1.14
J											
05	0.208	1.36		3,820	0.789	251	0.329	2,100	5.23	2,310	1.70
08	0.197	1.39		3,700	0.790	258	0.327	2,290	4.94	2,510	1.56
10	0.208	1.35		3,557	0.730	273	0.330	2,130	4.59	2,409	1.02
22	0.200	1.43		3,524	0.839	273	0.330	2,161	4.53	2,445	0.96
31	0.203	1.37		4,250	0.790	250	0.332	2,140	5.57	2,380	1.65
41	0.198	1.34		4,160	0.788	257	0.330	2,250	4.89	2,480	1.53
41	0.202	1.34		3,400	0.790	251	0.327	2,090	5.29	2,300	1.76
44	0.199	1.39		3,418	0.721	266	0.333	2,128	4.38	2,412	0.56
52	0.209	1.39		3,993	0.853	274	0.333	2,133	4.37	2,415	0.93
AVERAGE	0.203	1.37		3,758	0.788	261.4444	0.330	2,158	4.87	2,407	1.30
L											
25	0.218	1.40		3,820	0.730	294	0.325	1,600	8.38	1,820	2.26
59	0.287	1.85		3,897	0.514	237	0.343	13,500	1.69	2,150	2.09
AVERAGE	0.253	1.63		3,859	0.622	266	0.334	7,550	5.04	2,020	2.18
M											
04	0.111	1.42		3,886	0.438	296	0.318	2,475	4.80	2,887	0.60
47	0.105	1.41		4,003	0.591	303	0.315	2,411	4.50	2,759	0.80
57	0.115	1.41		4,065	0.417	289	0.324	2,603	3.80	2,959	0.60
AVERAGE	0.110	1.41		3,985	0.482	296	0.319	2,496	4.37	2,868	0.67
N											
07	0.196	1.37		3,594	0.779	269	0.337	2,280	3.65	2,510	0.70
43		1.42		3,656	0.654	292	0.332	2,350	3.70	2,630	0.80
95	0.195	1.37		3,528	0.704	254	0.340	2,370	3.85	2,610	0.80
AVERAGE	0.196	1.39		3,593	0.712	271.6667	0.336	2,333	3.73	2,583	0.77
O											
76	0.187	1.37		4,146	0.624	279	0.340	2,421	3.49	2,656	0.34
85	0.188	1.35		4,362	0.626	281	0.336	2,502	3.44	2,744	0.25
AVERAGE	0.188	1.36		4,254	0.625	280	0.338	2,462	3.47	2,700	0.30
Q											
23	0.204	1.43		3,802	0.635	268	0.340	2,410	4.50	2,630	1.41
93	0.200	1.43		3,826	0.868	276	0.340	2,248	5.06	2,477	1.57
AVERAGE	0.202	1.43		3,814	0.752	272	0.340	2,329	4.78	2,554	1.49
S											
53	0.198	1.34		3,680	0.743	286	0.375	2,558	3.09	2,890	-0.27
64	0.198	1.33		3,304	0.746	278	0.323	2,606	3.00	2,941	-0.32
AVERAGE	0.198	1.34		3,492	0.745	282	0.349	2,582	3.05	2,916	-0.30
U											
13	0.204	1.34		4,500	0.744	295	0.331	2,140	4.20	2,340	0.95
24	0.202	1.33		4,420	0.724	284	0.332	2,210	4.68	2,450	0.92
AVERAGE	0.203	1.34		4,460	0.734	289.5	0.332	2,175	4.44	2,395	0.94
V											
58	0.193	1.38		4,373	0.799	297	0.327	2,109	4.08	2,304	1.03
78	0.193	1.38		4,235	0.779	289	0.333	2,211	4.20	2,422	0.73
81	0.193	1.36		4,170	0.661	281	0.331	2,272	4.48	2,527	0.73
AVERAGE	0.193	1.37		4,259	0.746	289	0.330	2,197	4.25	2,418	0.83

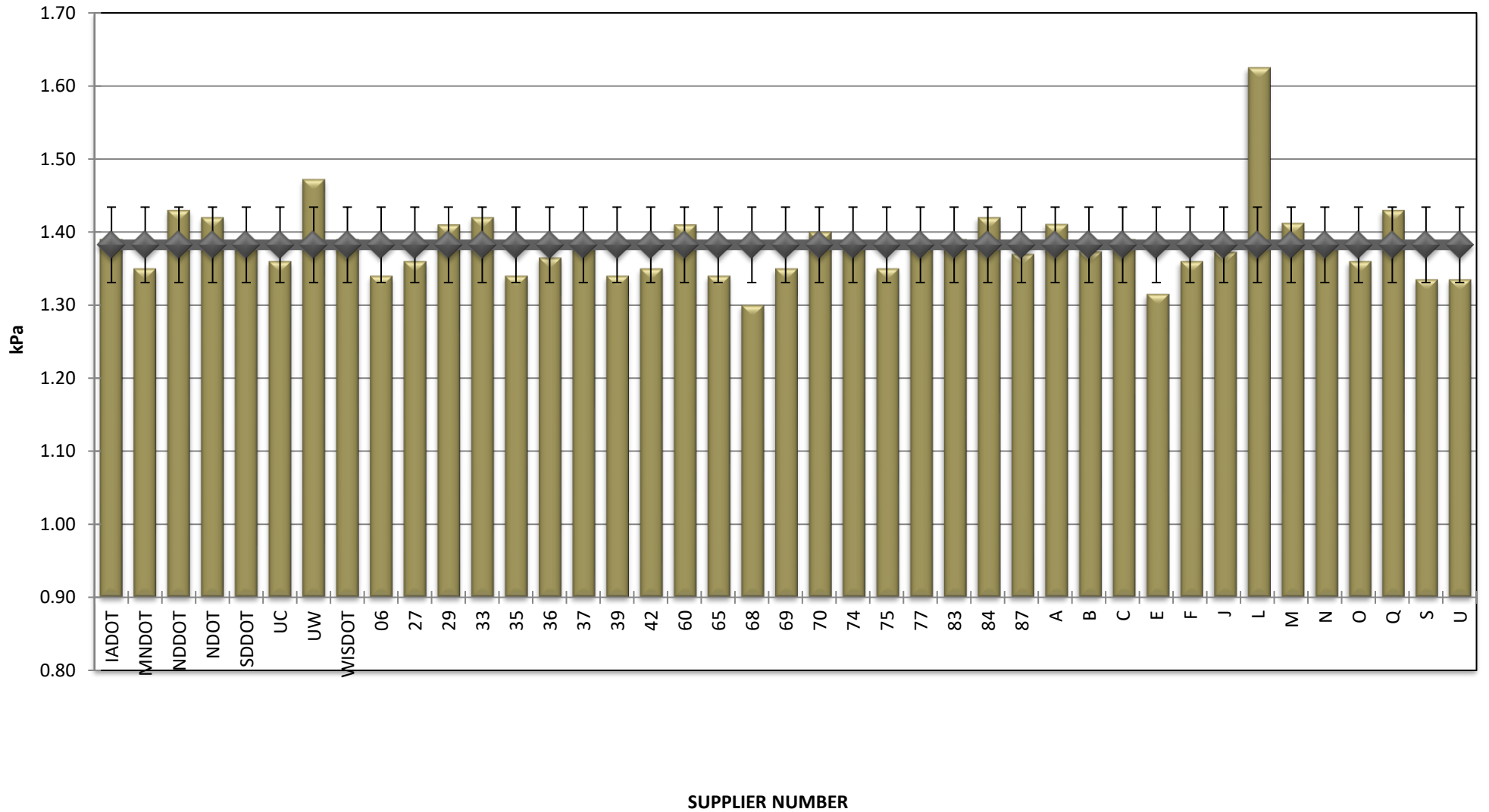
**COMBINED STATE BINDER GROUP ROUND ROBIN
SUMMARY B 2019-2
PG 52S-34**

ROTATIONAL VISCOSITY



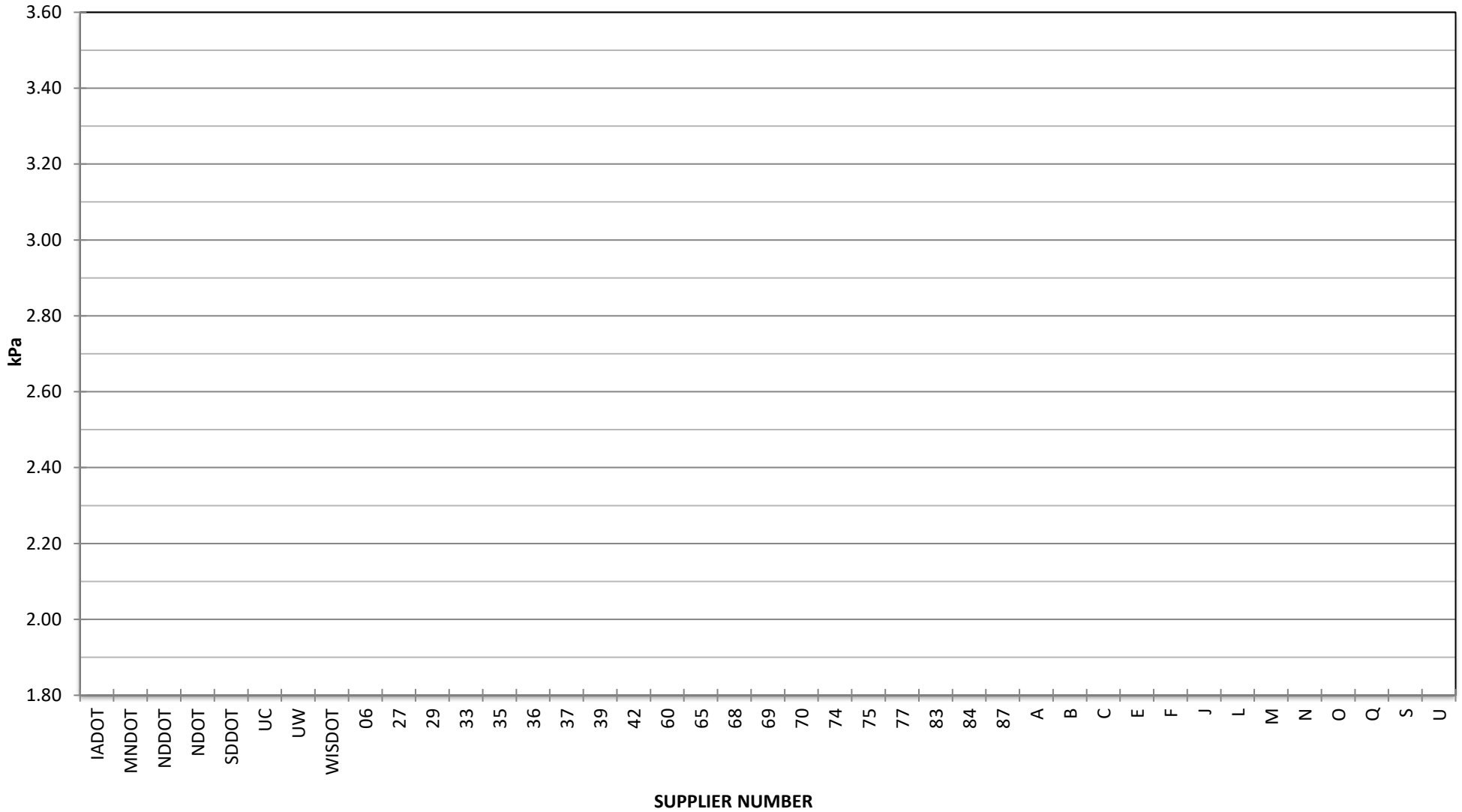
COMBINED STATE BINDER GROUP ROUND ROBIN
SUMMARY B 2019-2
PG 52S-34

DSR - ORIGINAL



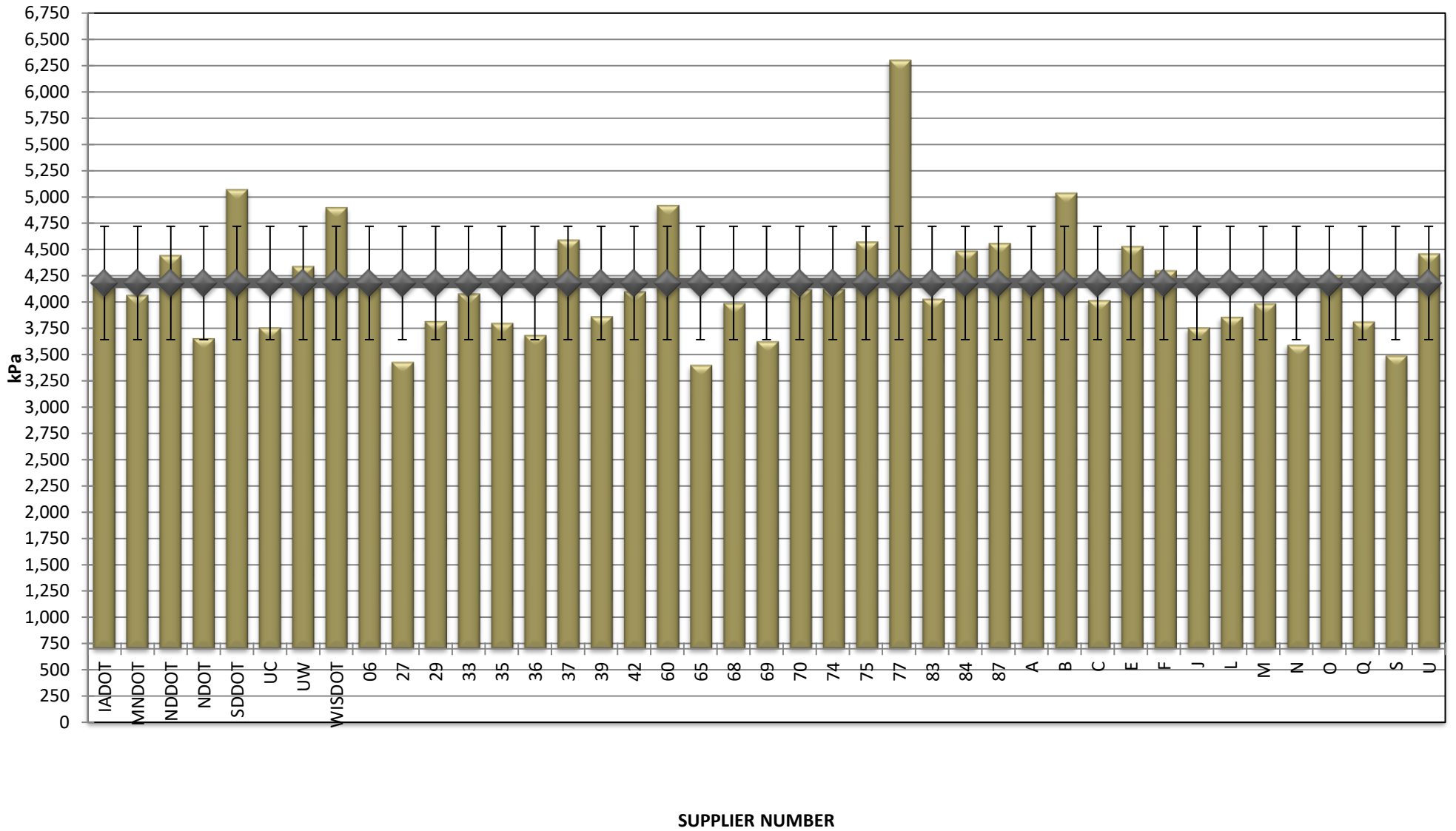
COMBINED STATE BINDER GROUP ROUND ROBIN
SUMMARY B 2019-2
PG 52S-34

DSR - RTFO



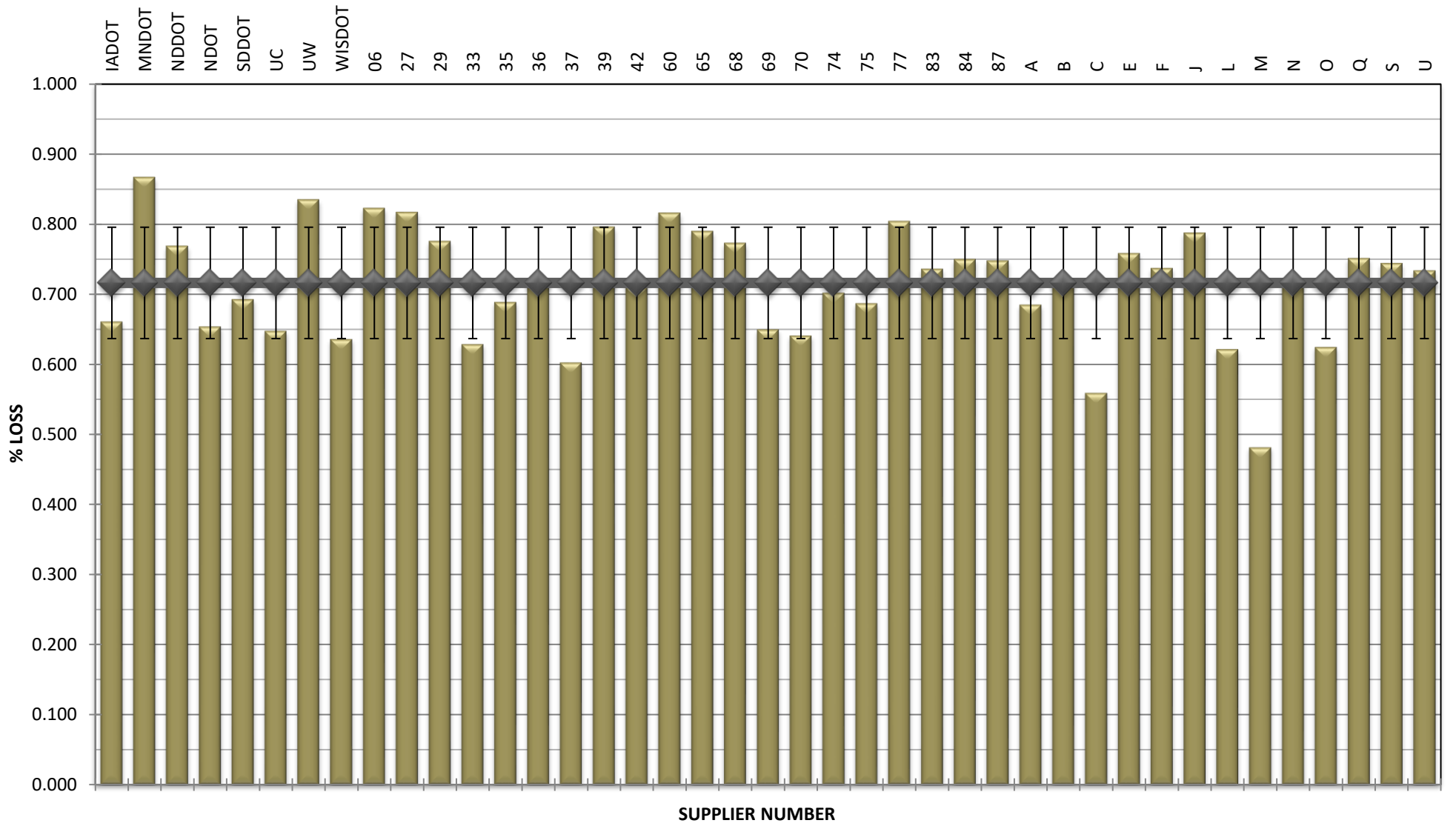
**COMBINED STATE BINDER GROUP ROUND ROBIN
SUMMARY B 2019-2
PG 52S-34**

DSR - PAV



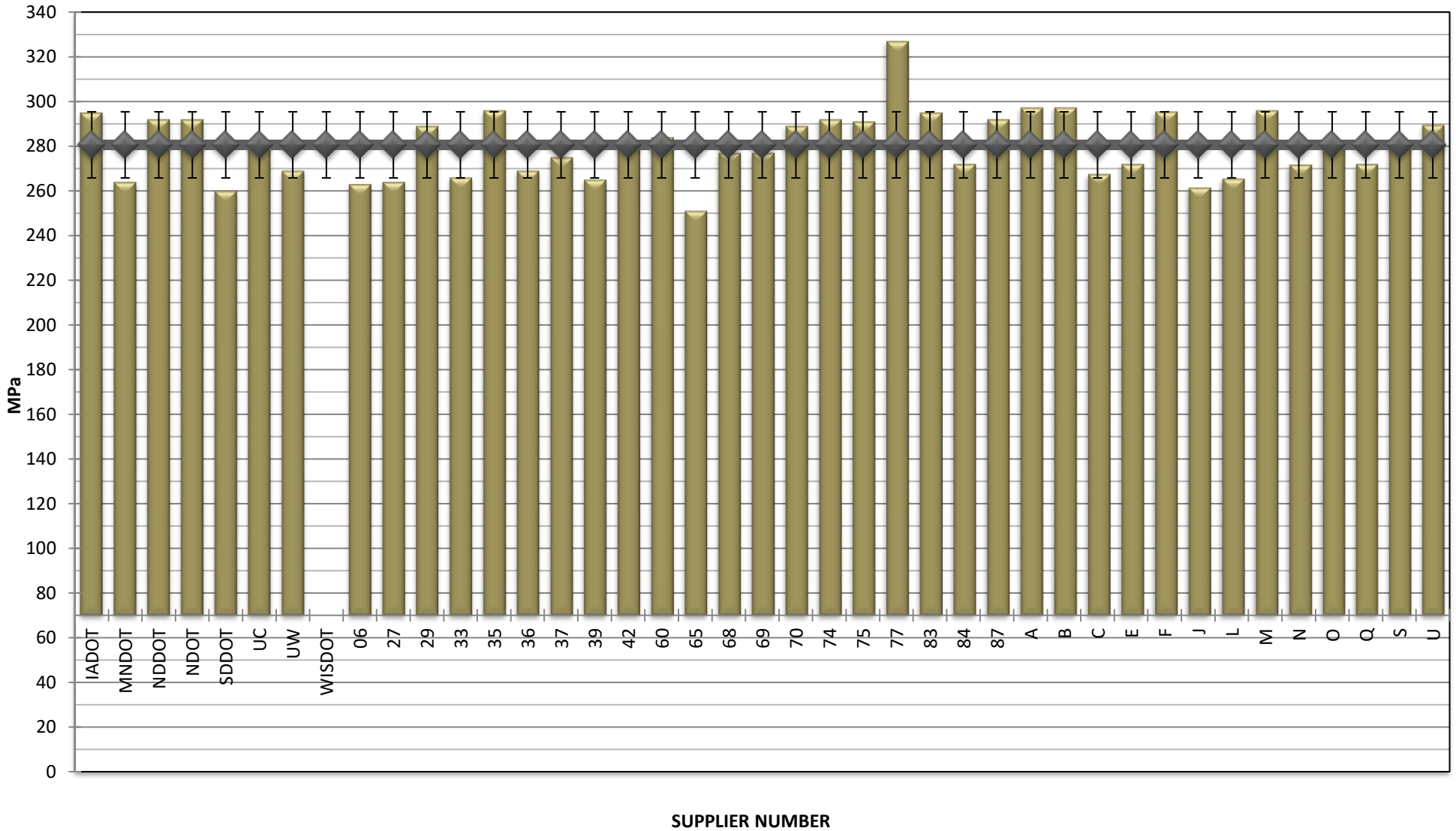
**COMBINED STATE BINDER GROUP ROUND ROBIN
SUMMARY B 2019-2
PG 52S-34**

RTFO MASS LOSS



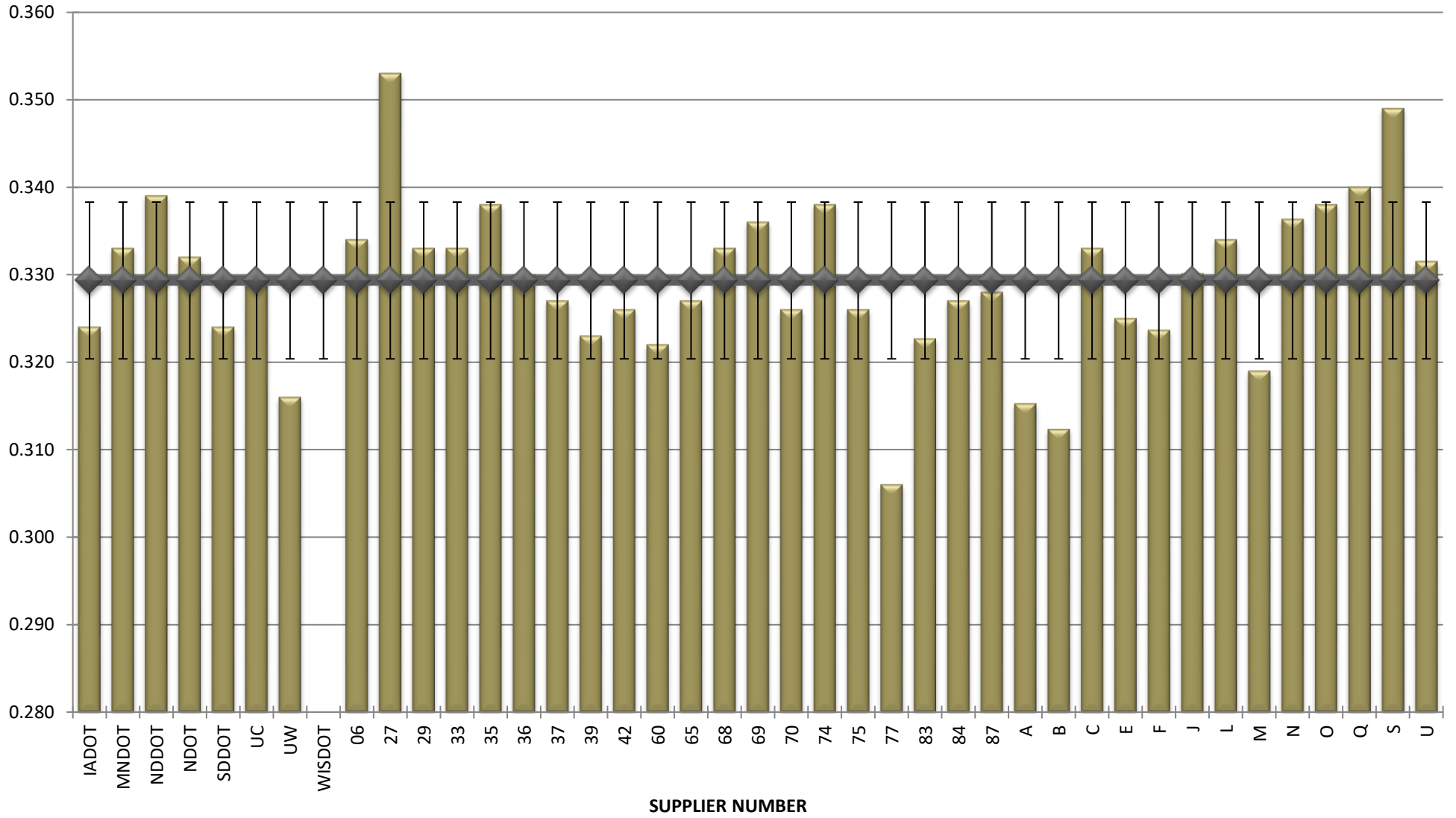
**COMBINED STATE BINDER GROUP ROUND ROBIN
SUMMARY B 2019-2
PG 52S-34**

BBR STIFFNESS



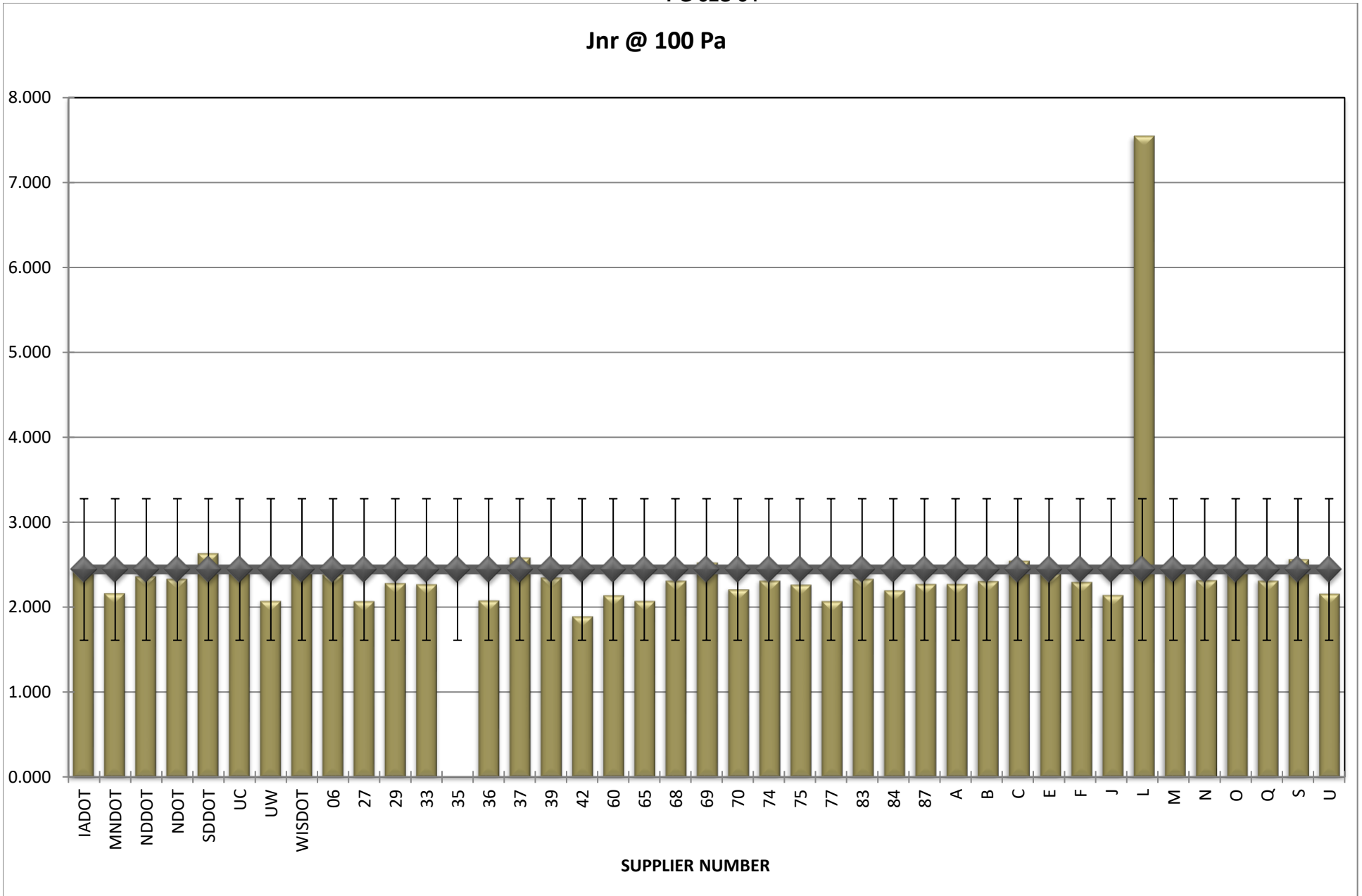
**COMBINED STATE BINDER GROUP ROUND ROBIN
SUMMARY B 2019-2
PG 52S-34**

BBR m-VALUE



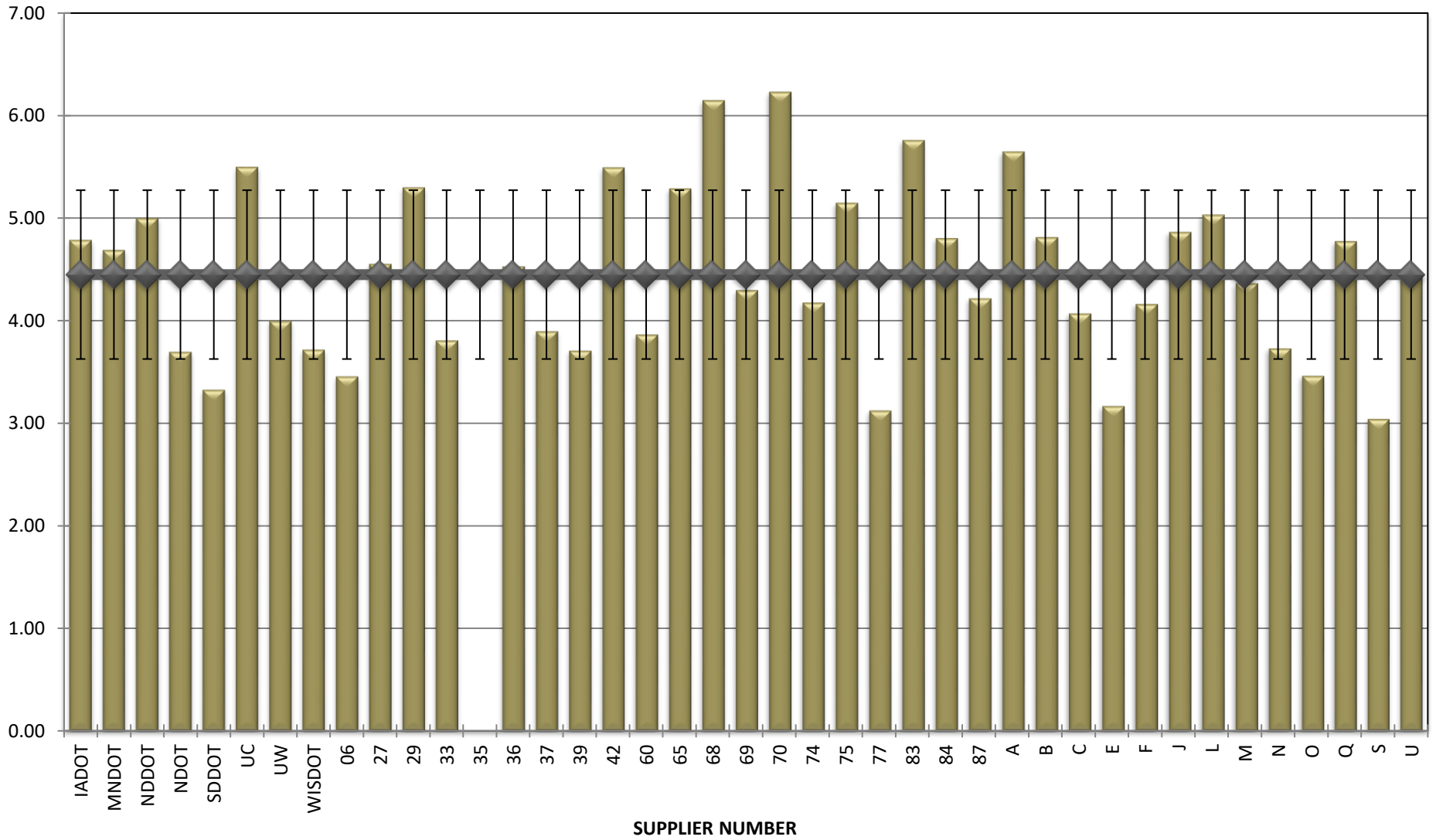
**COMBINED STATE BINDER GROUP ROUND ROBIN
SUMMARY B 2019-2
PG 52S-34**

Jnr @ 100 Pa



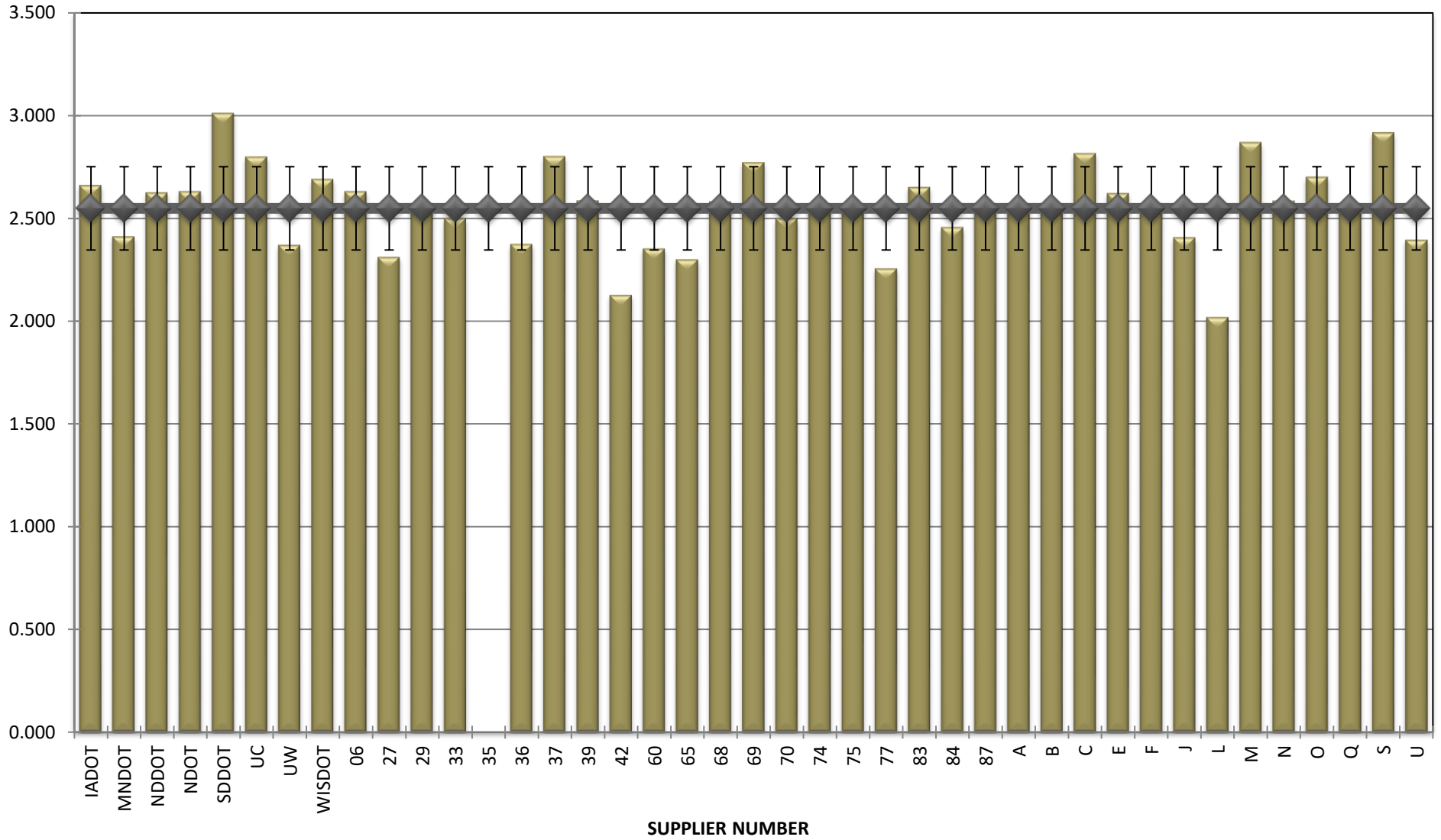
**COMBINED STATE BINDER GROUP ROUND ROBIN
SUMMARY B 2019-2
PG 52S-34**

% Recovery @ 100 Pa



**COMBINED STATE BINDER GROUP ROUND ROBIN
SUMMARY B 2019-2
PG 52S-34**

Jnr @ 3200 Pa



**COMBINED STATE BINDER GROUP ROUND ROBIN
SUMMARY B 2019-2
PG 52S-34**

% Recovery @ 3200 Pa

